

Palm Restaurant PR2 Manual

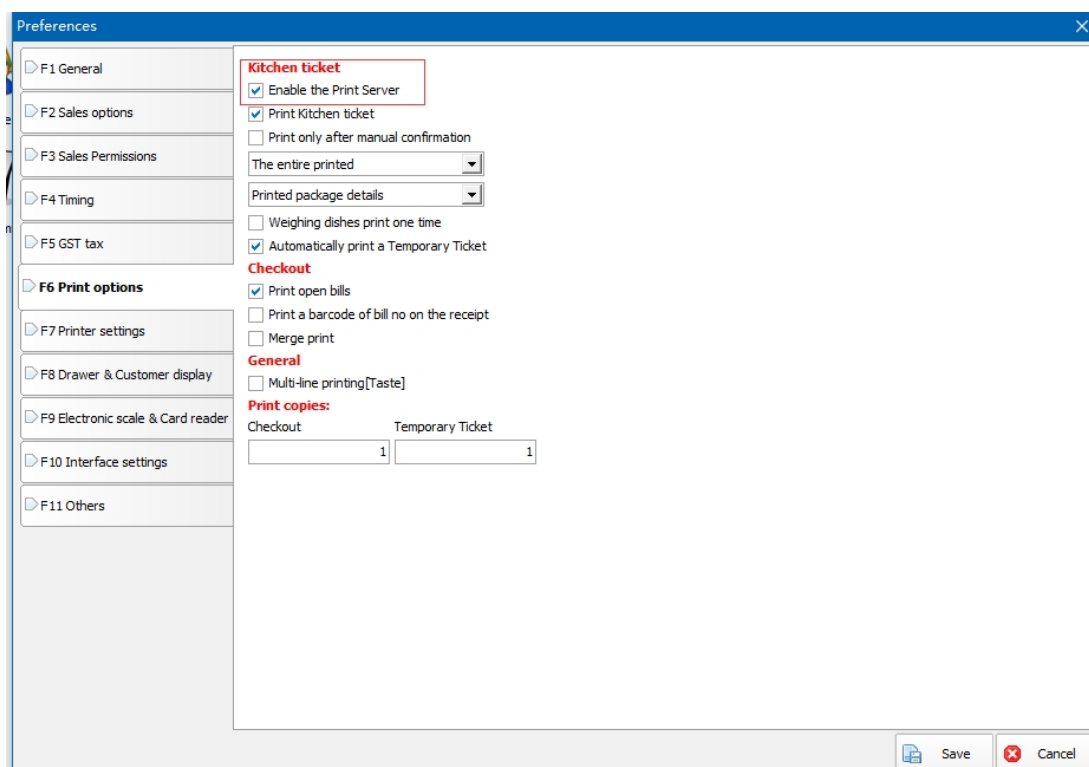
First copy the computer software S12.5 and mobile phone software to the computer according to PR2.APK

Install S12.5 on the computer, enter the print server icon, click the "Load APK" button, and select PR2.apk

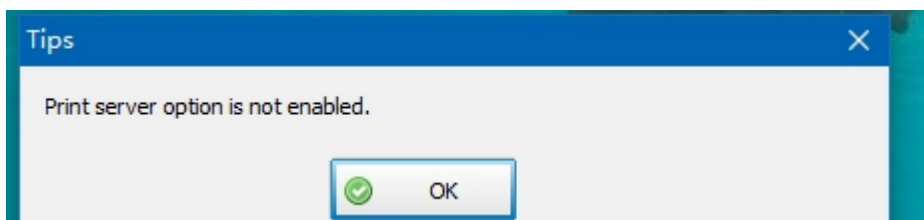
If the APK is installed on the mobile phone first, you can enter the computer IP address in the browser of the mobile phone, such as 192.168.1.104:8801 and press Enter. Need to enter the mobile phone software-settings-download updates)

The detailed operation steps are as follows:

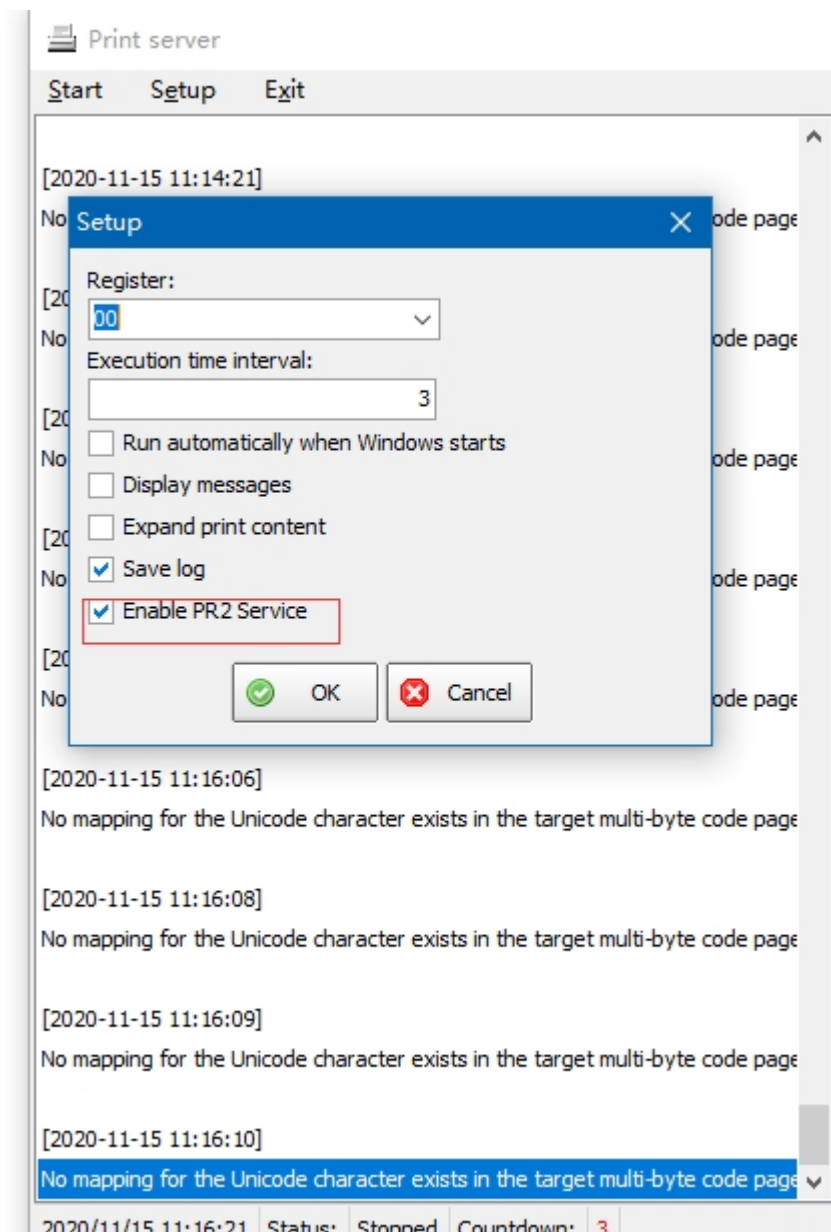
1. Enter the background-system function-print option tick to enable the print server function.



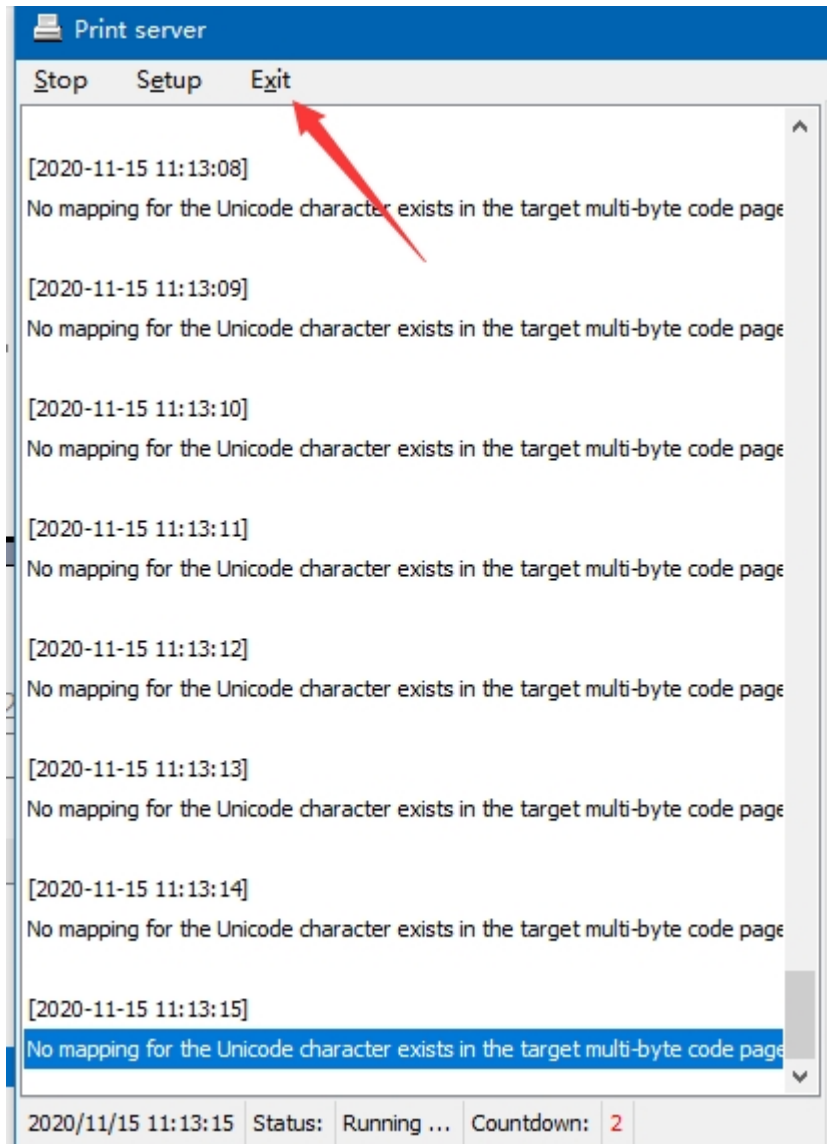
2. Open the desktop icon print server After opening, it pops up-registration window-click "Yes" to register automatically.



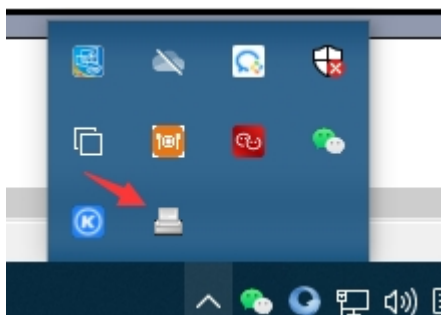
Open the print server settings and enable the PR2 service.



After saving the settings, choose to restart the print server. Click to exit and reopen



After running, the small icon opens in the lower right corner of the windows desktop



Load APK (open and select the app you are using to install PR2.apk package)